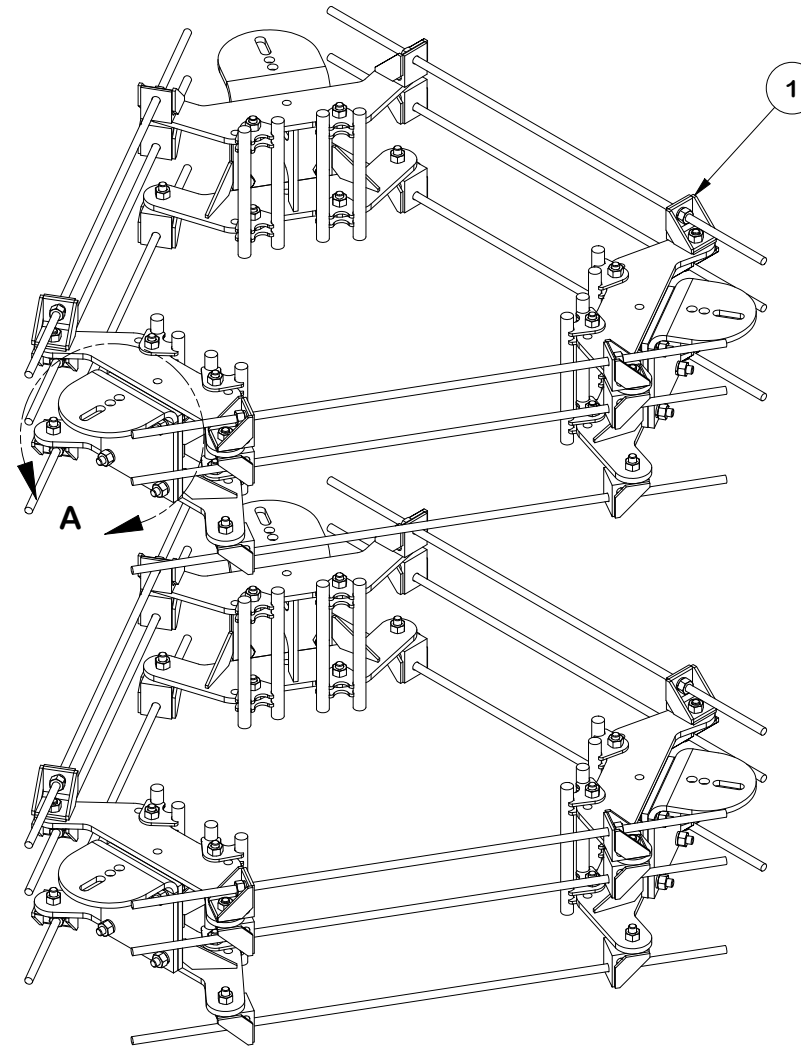
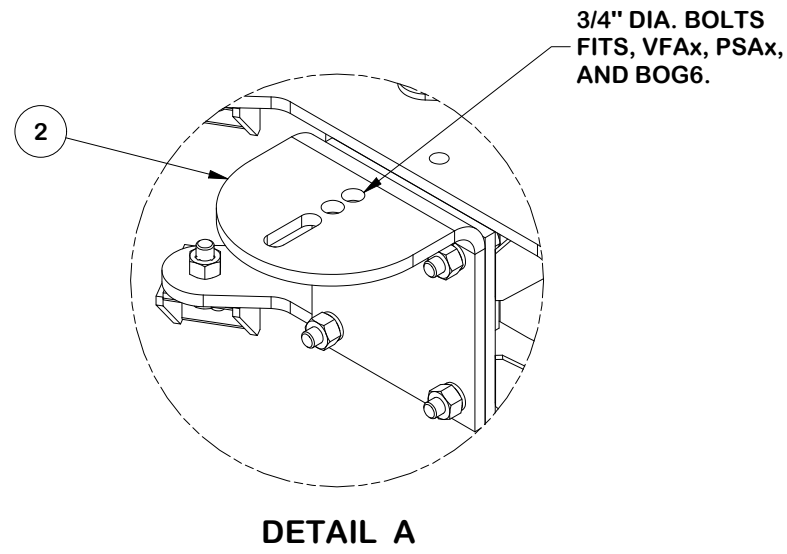


PARTS LIST						
ITEM	QTY	PART NO.	BOX NO.	PART DESCRIPTION	UNIT WT.	NET WT.
1	2	FLX3-SD		FLEXIBLE RING MOUNT 3-SIDED ASSEMBLY	276.80	553.61
2	3	RMBP	P-RMBP	SINGLE-SECTOR MONOPOLE DIRECT FRAME CONNECT KIT	37.96	113.89
TOTAL WT. #					667.50	



TOLERANCE NOTES

TOLERANCES ON DIMENSIONS, UNLESS OTHERWISE NOTED ARE:
 SAWED, SHEARED AND GAS CUT EDGES ($\pm 0.030"$)
 DRILLED AND GAS CUT HOLES ($\pm 0.030"$) - NO CONING OF HOLES
 LASER CUT EDGES AND HOLES ($\pm 0.010"$) - NO CONING OF HOLES
 BENDS ARE $\pm 1/2$ DEGREE
 ALL OTHER MACHINING ($\pm 0.030"$)
 ALL OTHER ASSEMBLY ($\pm 0.060"$)

PROPRIETARY NOTE:
 THE DATA AND TECHNIQUES CONTAINED IN THIS DRAWING ARE PROPRIETARY INFORMATION OF VALMONT INDUSTRIES AND CONSIDERED A TRADE SECRET. ANY USE OR DISCLOSURE WITHOUT THE CONSENT OF VALMONT INDUSTRIES IS STRICTLY PROHIBITED.

DESCRIPTION
MONOPOLE DIRECT FLEXIBLE FRAME CONNECT KIT 3 SECTORS

CPD NO. NCS	DRAWN BY KS 8/13/2025	ENG. APPROVAL 8/14/2025
CLASS 87	SUB 02	DRAWING USAGE CUSTOMER
CHECKED BY JET 8/14/2025		



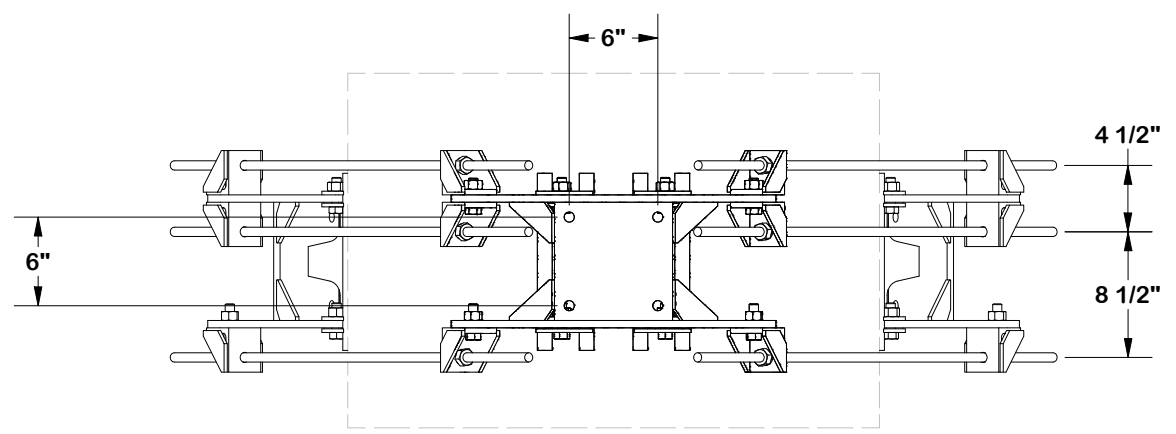
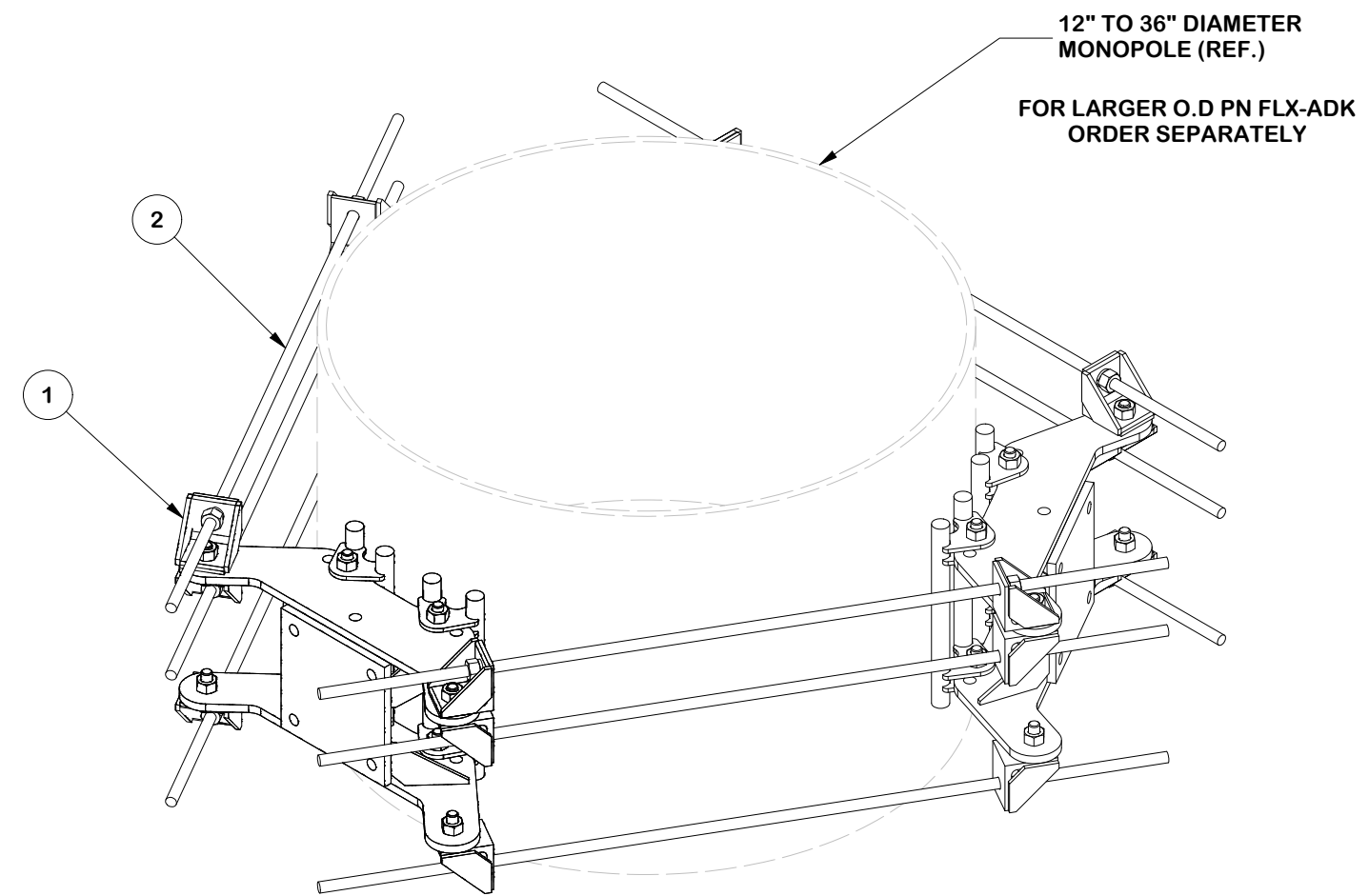
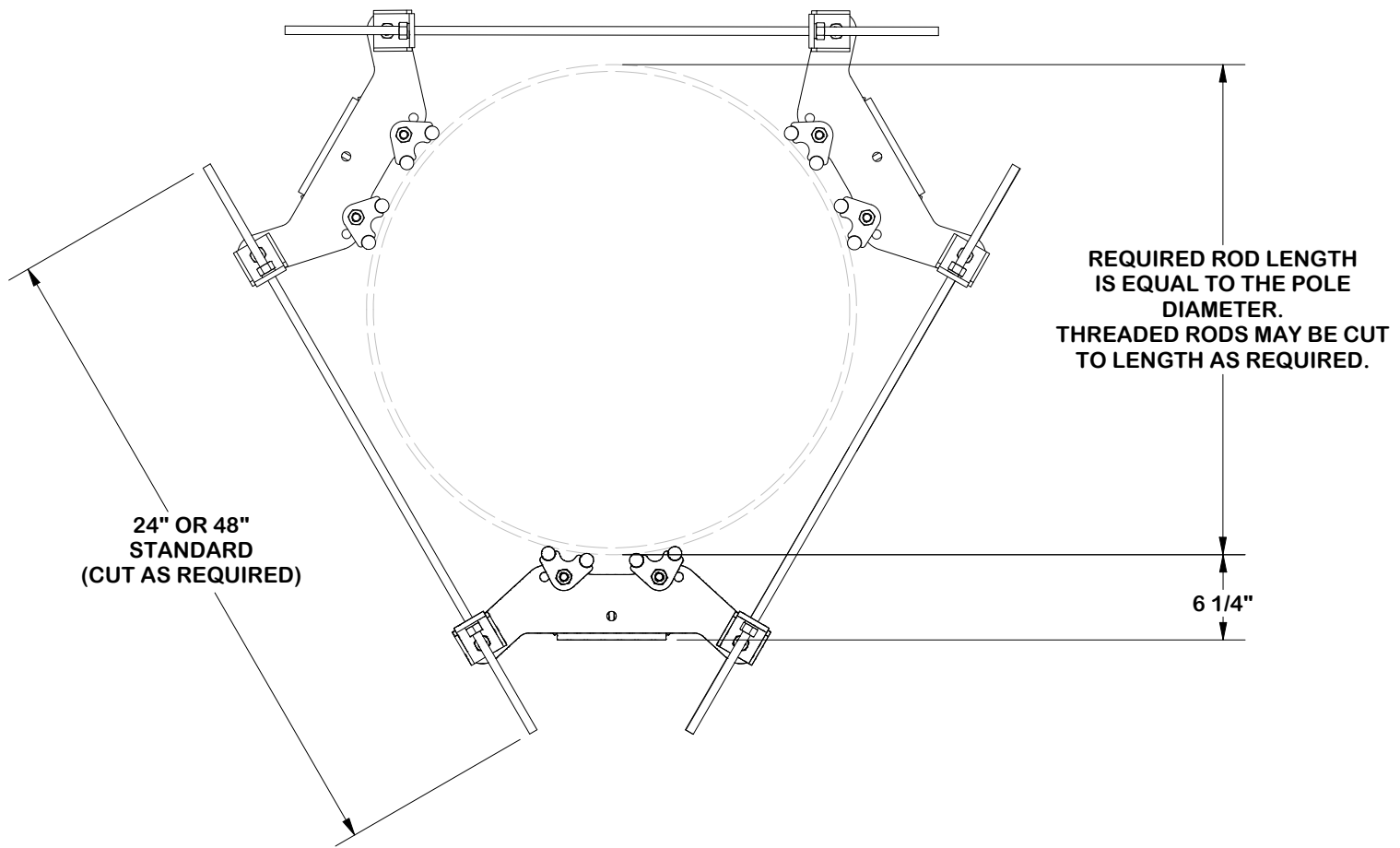
A valmont COMPANY

Engineering Support Team:
1-888-753-7446

Locations:
New York, NY
Atlanta, GA
Los Angeles, CA
Plymouth, IN
Salem, OR
Dallas, TX

PART NO. MDFCC-FLX3
DWG. NO. MDFCC-FLX3

PARTS LIST						UNIT WT.	NET WT.
1	3	FLX-SDSS	P-FLX-SDSS	FLEXIBLE RING MOUNT SINGLE SECTOR ASSEMBLY		72.51	217.54
2	1	LWRM-HDWE	P-LWRM-HDWE	THREADED ROD KIT WITH HARDWARE		59.26	59.26
TOTAL WT. #							276.80



- NOTE:**
1. LOCKNUTS CANNOT BE LOOSENED
 2. TIGHTEN LOCKNUTS AFTER DESIRED POSITION (SEE PAGE 3)
 3. COMPATIBLE WITH 6" X 6" BOLT PATTERN & FORTRESS™ SERIES

FINISH:
HOT DIP GALVANIZED.

TOLERANCE NOTES

TOLERANCES ON DIMENSIONS, UNLESS OTHERWISE NOTED ARE:
 SAWED, SHEARED AND GAS CUT EDGES ($\pm 0.030"$)
 DRILLED AND GAS CUT HOLES ($\pm 0.030"$) - NO CONING OF HOLES
 LASER CUT EDGES AND HOLES ($\pm 0.010"$) - NO CONING OF HOLES
 BENDS ARE $\pm 1/2$ DEGREE
 ALL OTHER MACHINING ($\pm 0.030"$)
 ALL OTHER ASSEMBLY ($\pm 0.060"$)

PROPRIETARY NOTE:
THE DATA AND TECHNIQUES CONTAINED IN THIS DRAWING ARE PROPRIETARY INFORMATION OF VALMONT INDUSTRIES AND CONSIDERED A TRADE SECRET. ANY USE OR DISCLOSURE WITHOUT THE CONSENT OF VALMONT INDUSTRIES IS STRICTLY PROHIBITED.

DESCRIPTION
**MONOPOLE DIRECT FLEXIBLE FRAME CONNECT
 KIT 3 SECTORS**

SITE PRO 1
 A valmont COMPANY

Engineering Support Team:
 1-888-753-7446

Locations:
 New York, NY
 Atlanta, GA
 Los Angeles, CA
 Plymouth, IN
 Salem, OR
 Dallas, TX

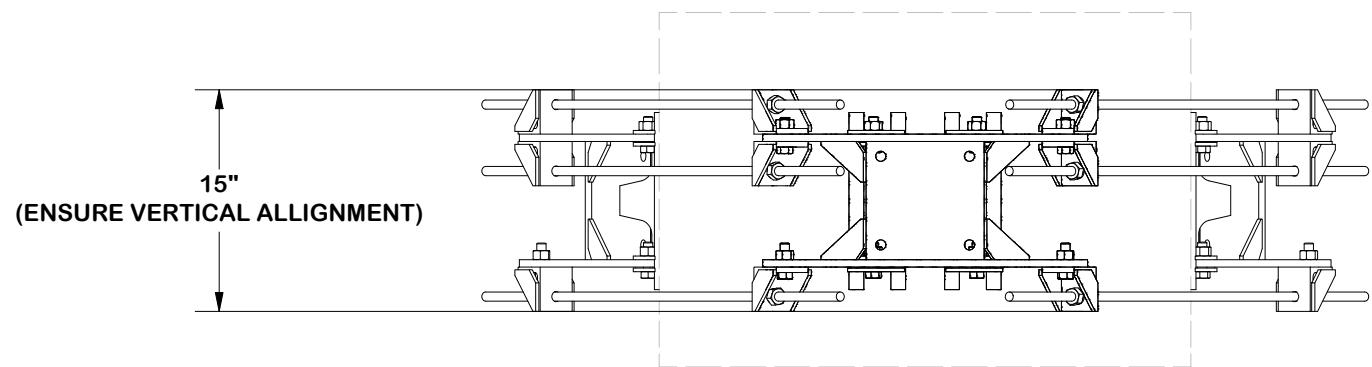
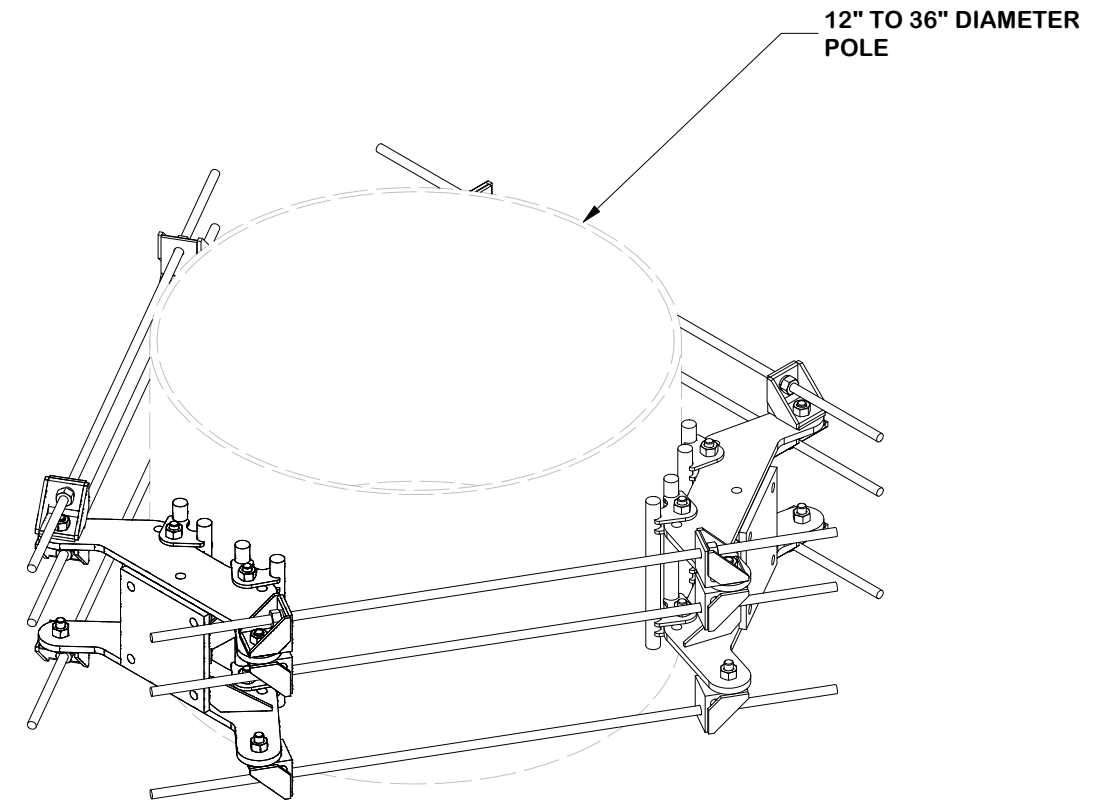
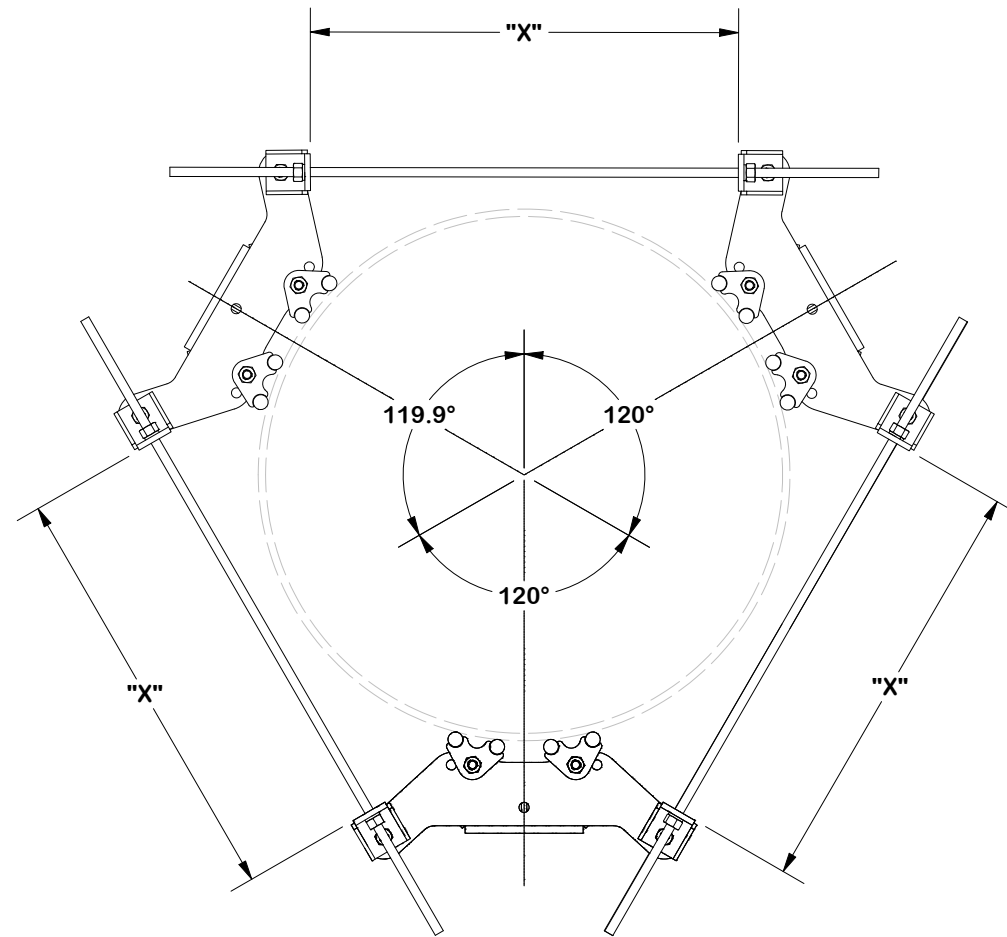
REV	DESCRIPTION OF REVISIONS	CPD	BY	DATE
B	ADDED NOTE TO PAGE 1	NCS	ADB	3/26/2025
A	CHANGED KITS	NCS	NSP	10/3/2024

REVISION HISTORY

CPD NO.	DRAWN BY	ENG. APPROVAL
NCS	KS 8/13/2025	8/14/2025
CLASS	DRAWING USAGE	CHECKED BY
87	CUSTOMER	JET 8/14/2025

PART NO.	FLX3-SD
DWG. NO.	MDFCC-FLX3

**NOTE:
ENSURE EQUAL DISTANCE
BETWEEN BRACKETS "X"
AND AT 120° APART**



TOLERANCE NOTES

TOLERANCES ON DIMENSIONS, UNLESS OTHERWISE NOTED ARE:
 SAWED, SHEARED AND GAS CUT EDGES ($\pm 0.030"$)
 DRILLED AND GAS CUT HOLES ($\pm 0.030"$) - NO CONING OF HOLES
 LASER CUT EDGES AND HOLES ($\pm 0.010"$) - NO CONING OF HOLES
 BENDS ARE $\pm 1/2$ DEGREE
 ALL OTHER MACHINING ($\pm 0.030"$)
 ALL OTHER ASSEMBLY ($\pm 0.060"$)

PROPRIETARY NOTE:
 THE DATA AND TECHNIQUES CONTAINED IN THIS DRAWING ARE PROPRIETARY INFORMATION OF VALMONT INDUSTRIES AND CONSIDERED A TRADE SECRET. ANY USE OR DISCLOSURE WITHOUT THE CONSENT OF VALMONT INDUSTRIES IS STRICTLY PROHIBITED.

DESCRIPTION
**MONOPOLE DIRECT FLEXIBLE FRAME CONNECT
 KIT 3 SECTORS**

SITE PRO 1
 A valmont COMPANY

Engineering Support Team:
 1-888-753-7446

Locations:
 New York, NY
 Atlanta, GA
 Los Angeles, CA
 Plymouth, IN
 Salem, OR
 Dallas, TX

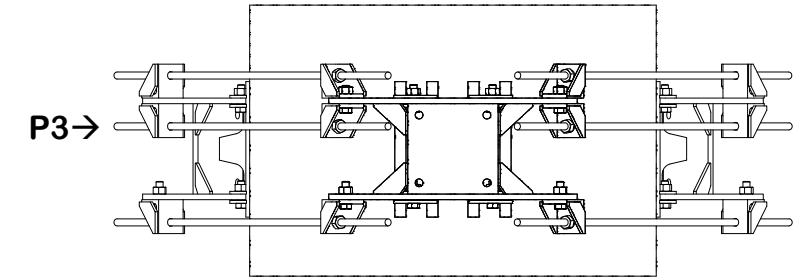
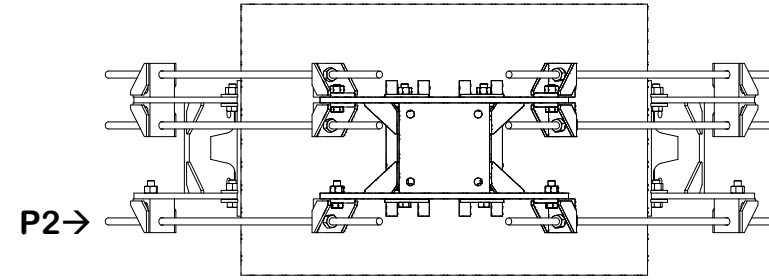
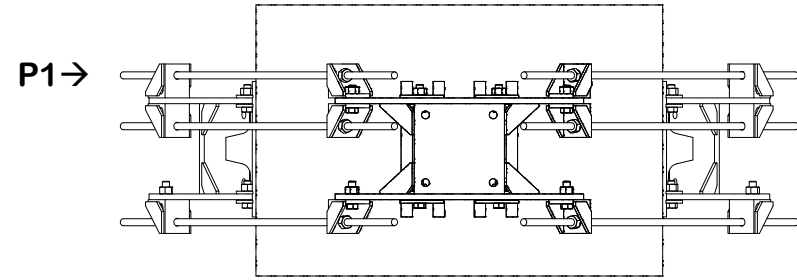
REV	DESCRIPTION OF REVISIONS	CPD	BY	DATE
B	ADDED NOTE TO PAGE 1	NCS	ADB	3/26/2025
A	CHANGED KITS	NCS	NSP	10/3/2024

REVISION HISTORY

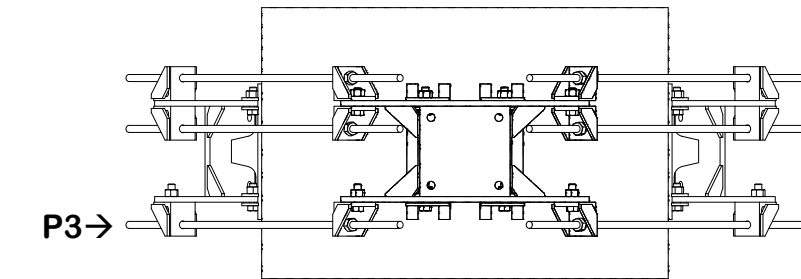
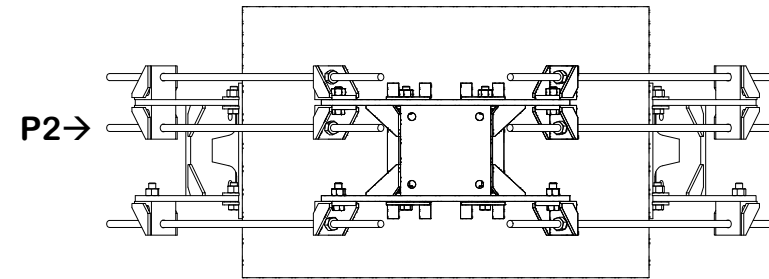
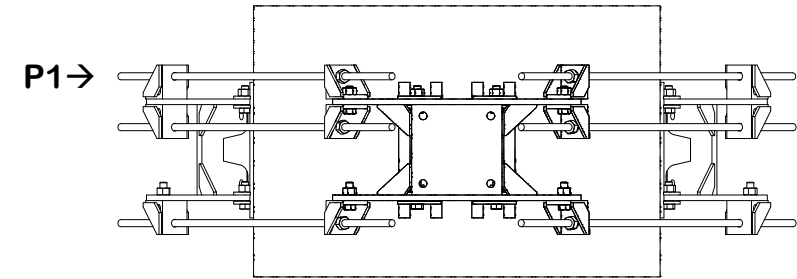
CPD NO. NCS	DRAWN BY KS	8/13/2025	ENG. APPROVAL 8/14/2025
CLASS 87	SUB 02	DRAWING USAGE CUSTOMER	CHECKED BY JET
		8/14/2025	

PART NO. FLX3-SD
DWG. NO. MDFCC-FLX3

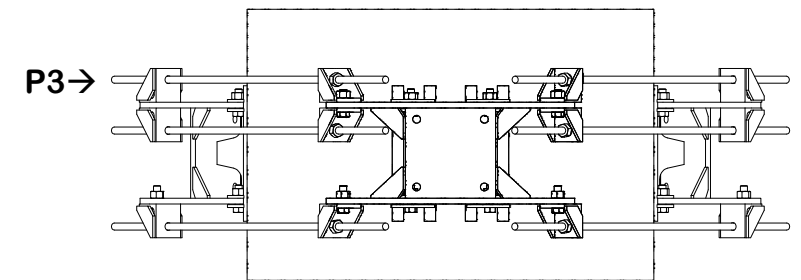
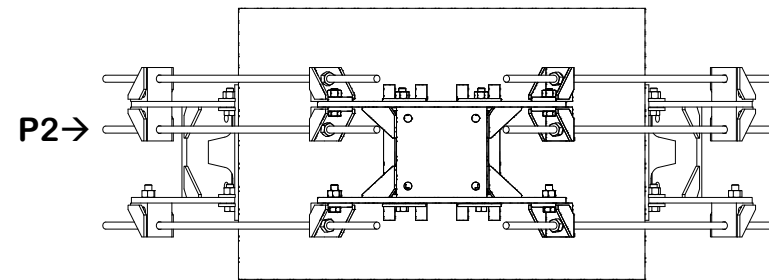
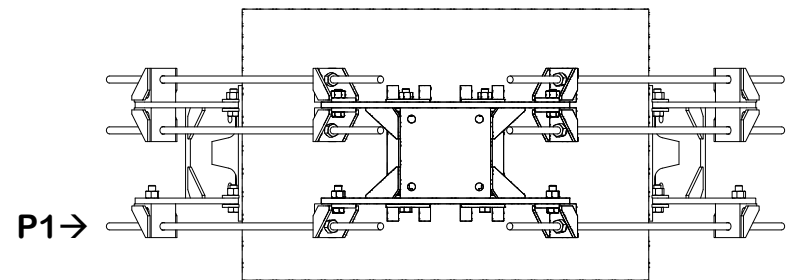
INSTALL ORDER



INITIAL TIGHTENING



FINAL TIGHTENING



TOLERANCE NOTES

TOLERANCES ON DIMENSIONS, UNLESS OTHERWISE NOTED ARE:
 SAWED, SHEARED AND GAS CUT EDGES ($\pm 0.030''$)
 DRILLED AND GAS CUT HOLES ($\pm 0.030''$) - NO CONING OF HOLES
 LASER CUT EDGES AND HOLES ($\pm 0.010''$) - NO CONING OF HOLES
 BENDS ARE $\pm 1/2$ DEGREE
 ALL OTHER MACHINING ($\pm 0.030''$)
 ALL OTHER ASSEMBLY ($\pm 0.060''$)

PROPRIETARY NOTE:
 THE DATA AND TECHNIQUES CONTAINED IN THIS DRAWING ARE PROPRIETARY INFORMATION OF VALMONT INDUSTRIES AND CONSIDERED A TRADE SECRET. ANY USE OR DISCLOSURE WITHOUT THE CONSENT OF VALMONT INDUSTRIES IS STRICTLY PROHIBITED.

DESCRIPTION
**MONOPOLE DIRECT FLEXIBLE FRAME CONNECT
 KIT 3 SECTORS**

CPD NO. NCS	DRAWN BY KS	8/13/2025	ENG. APPROVAL 8/14/2025
CLASS 87	SUB 02	DRAWING USAGE CUSTOMER	CHECKED BY JET
		8/14/2025	



A valmont COMPANY

Engineering Support Team:
1-888-753-7446

Locations:
New York, NY
Atlanta, GA
Los Angeles, CA
Plymouth, IN
Salem, OR
Dallas, TX

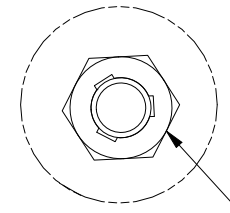
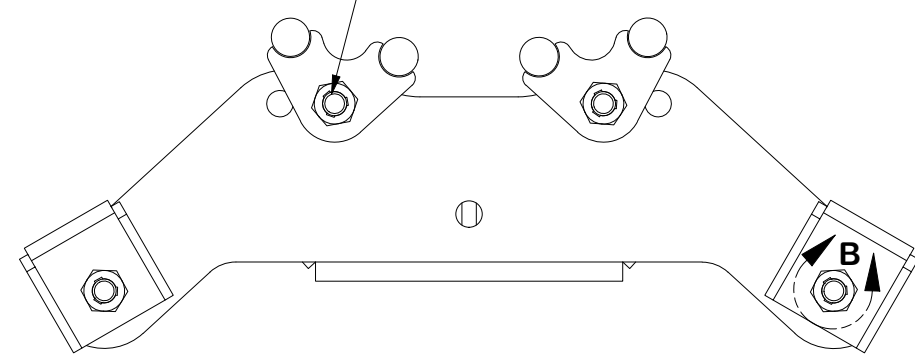
REV	DESCRIPTION OF REVISIONS	CPD	BY	DATE
B	ADDED NOTE TO PAGE 1	NCS	ADB	3/26/2025
A	CHANGED KITS	NCS	NSP	10/3/2024

PART NO. **FLX3-SD**
 DWG. NO. **MDFCC-FLX3**

PARTS LIST

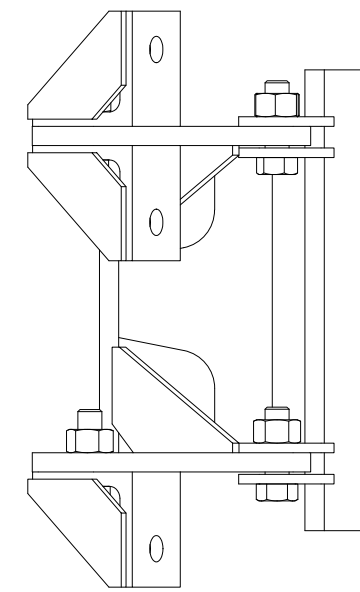
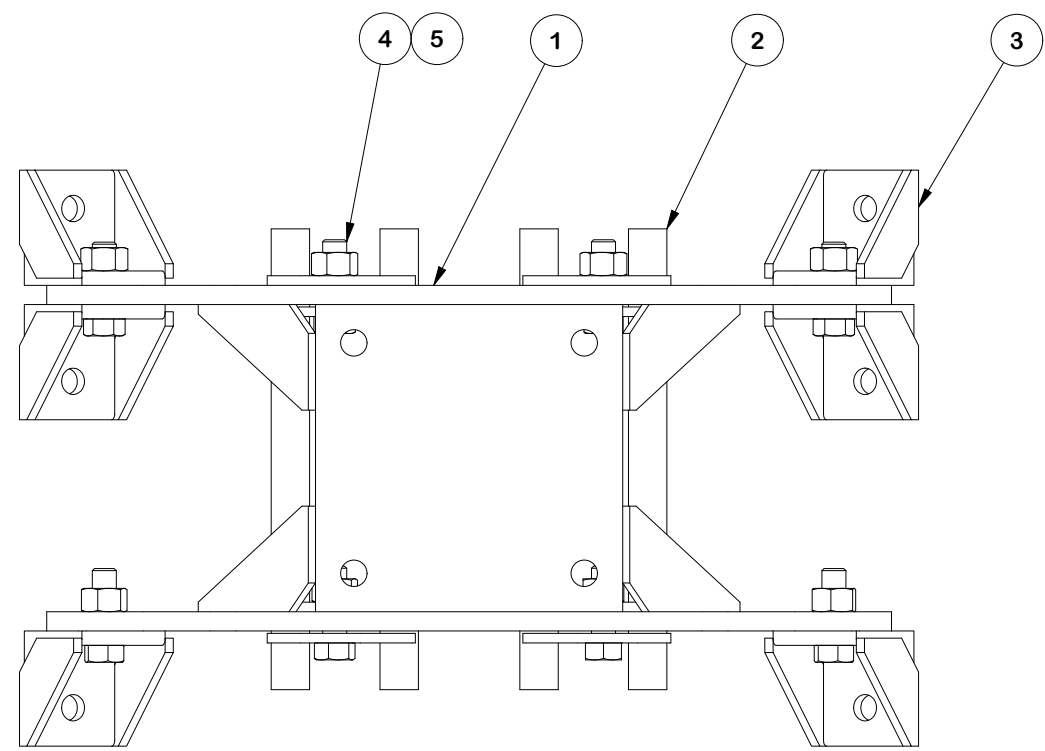
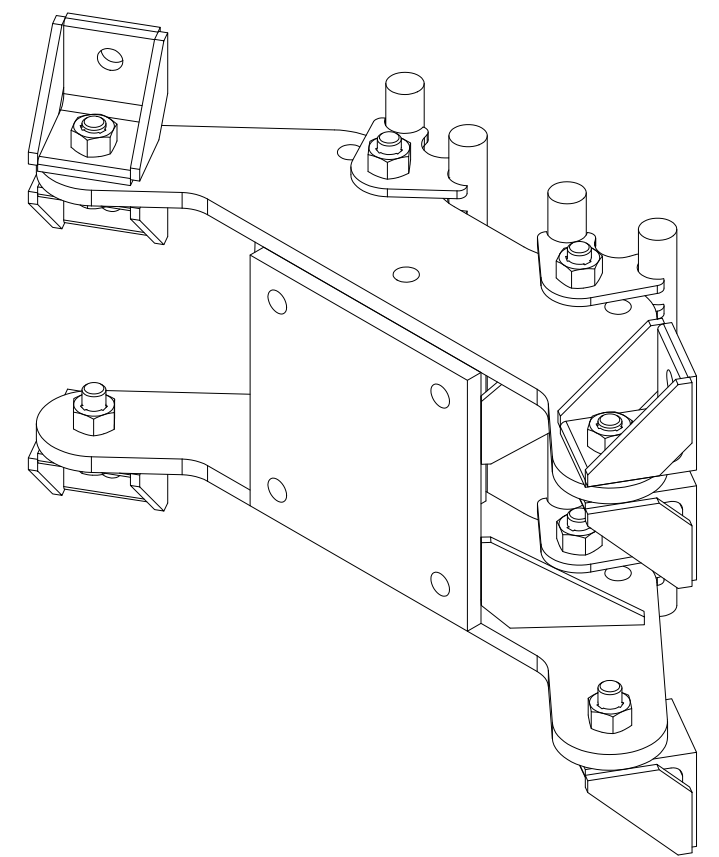
ITEM	QTY	PART NO.	PART DESCRIPTION	UNIT WT.	NET WT.
1	1	X-CR-SDW	FLEXIBLE RING MOUNT	42.23	42.23
2	2	X-CR-PW12	12" CLAMP RING PIVOT WELDMENT	6.93	13.85
3	6	X-CR-AGW	ANGLE ON WELDMENT	2.20	13.18
4	8	G5802	5/8" x 2" HDG HEX BOLT GR5	0.27	2.16
5	8	G58TRI-LNUT	5/8" HDG HEAVY 2H TRI-LOCK NUT	0.14	1.10
TOTAL WT. #				72.51	

NOTE:
CLAMP RING PIVOT WELDMENT SHOULD BE
ASSEMBLED IN THE INNER HOLE OF WELDMENT



DETAIL B

NOTE:
FOR TRI-LOCKNUT INSTALLATION, ENSURE GROOVED SIDE
IS ORIENTED AWAY FROM THE BOLT HEAD



FINISH:
HOT DIP GALVANIZED.

TOLERANCE NOTES

TOLERANCES ON DIMENSIONS, UNLESS OTHERWISE NOTED ARE:
SAWED, SHEARED AND GAS CUT EDGES ($\pm 0.030"$)
DRILLED AND GAS CUT HOLES ($\pm 0.030"$) - NO CONING OF HOLES
LASER CUT EDGES AND HOLES ($\pm 0.010"$) - NO CONING OF HOLES
BENDS ARE $\pm 1/2$ DEGREE
ALL OTHER MACHINING ($\pm 0.030"$)
ALL OTHER ASSEMBLY ($\pm 0.060"$)

PROPRIETARY NOTE:
THE DATA AND TECHNIQUES CONTAINED IN THIS DRAWING ARE PROPRIETARY INFORMATION OF VALMONT INDUSTRIES AND CONSIDERED A TRADE SECRET. ANY USE OR DISCLOSURE WITHOUT THE CONSENT OF VALMONT INDUSTRIES IS STRICTLY PROHIBITED.

DESCRIPTION
**MONOPOLE DIRECT FLEXIBLE FRAME CONNECT
KIT 3 SECTORS**

CPD NO. NCS	DRAWN BY KS	8/13/2025	ENG. APPROVAL 8/14/2025
CLASS 87	SUB 02	DRAWING USAGE CUSTOMER	CHECKED BY JET
			8/14/2025



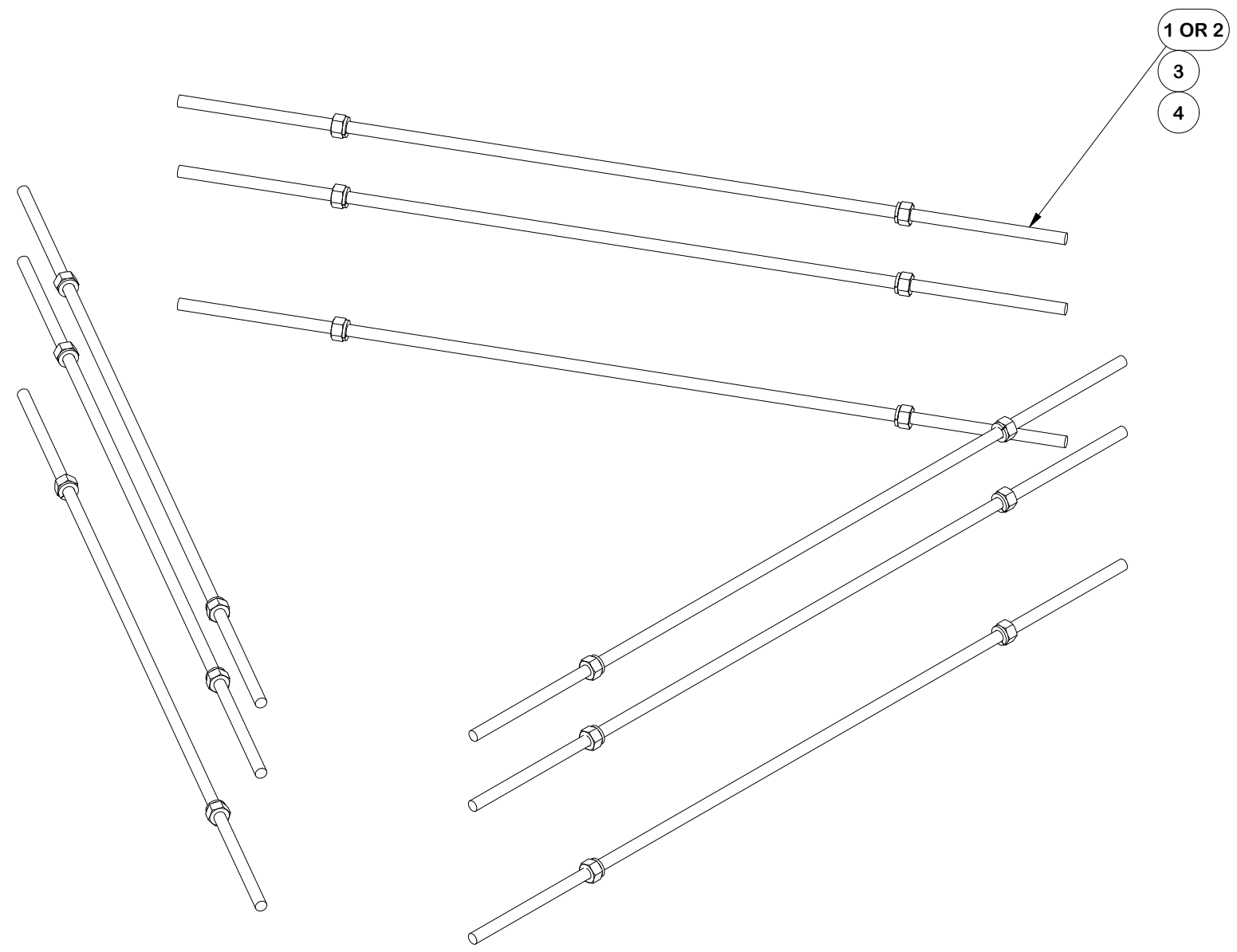
A valmont COMPANY

Locations:
New York, NY
Atlanta, GA
Los Angeles, CA
Plymouth, IN
Salem, OR
Dallas, TX

Engineering
Support Team:
1-888-753-7446

PART NO.	
DWG. NO.	MDFCC-FLX3

PARTS LIST					
ITEM	QTY	PART NO.	PART DESCRIPTION	UNIT WT.	NET WT.
1	9	G58R-48	5/8" x 48" THREADED ROD (HDG.)	4.18	37.63
2	9	G58R-24	5/8" x 24" THREADED ROD (HDG.)	2.09	18.82
3	18	G58LW	5/8" HDG LOCKWASHER	0.03	0.47
4	18	G58NUT	5/8" HDG HEAVY 2H HEX NUT	0.13	2.34
TOTAL WT. #					59.26



FINISH:
HOT DIP GALVANIZED.

TOLERANCE NOTES
 TOLERANCES ON DIMENSIONS, UNLESS OTHERWISE NOTED ARE:
 SAWED, SHEARED AND GAS CUT EDGES ($\pm 0.030"$)
 DRILLED AND GAS CUT HOLES ($\pm 0.030"$) - NO CONING OF HOLES
 LASER CUT EDGES AND HOLES ($\pm 0.010"$) - NO CONING OF HOLES
 BENDS ARE $\pm 1/2$ DEGREE
 ALL OTHER MACHINING ($\pm 0.030"$)
 ALL OTHER ASSEMBLY ($\pm 0.060"$)

PROPRIETARY NOTE:
 THE DATA AND TECHNIQUES CONTAINED IN THIS DRAWING ARE PROPRIETARY INFORMATION OF VALMONT INDUSTRIES AND CONSIDERED A TRADE SECRET. ANY USE OR DISCLOSURE WITHOUT THE CONSENT OF VALMONT INDUSTRIES IS STRICTLY PROHIBITED.

DESCRIPTION
**MONOPOLE DIRECT FLEXIBLE FRAME CONNECT
 KIT 3 SECTORS**

CPD NO. NCS	DRAWN BY KS 8/13/2025	ENG. APPROVAL 8/14/2025
CLASS 87	SUB 02	DRAWING USAGE CUSTOMER
CHECKED BY JET 8/14/2025		



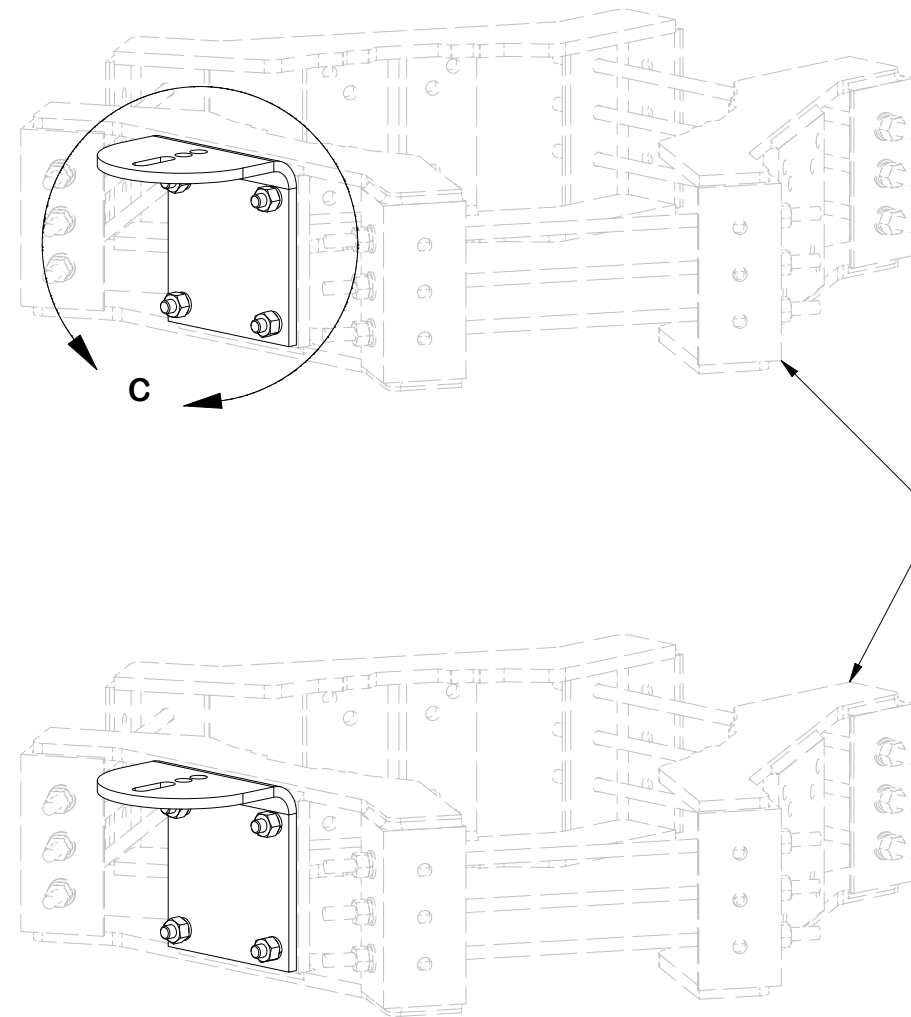
A **valmont** COMPANY

Locations:
 New York, NY
 Atlanta, GA
 Los Angeles, CA
 Plymouth, IN
 Salem, OR
 Dallas, TX

Engineering
 Support Team:
 1-888-753-7446

PART NO. LWRM-HDWE	6 OF 7 PAGE
DWG. NO. MDFCC-FLX3	

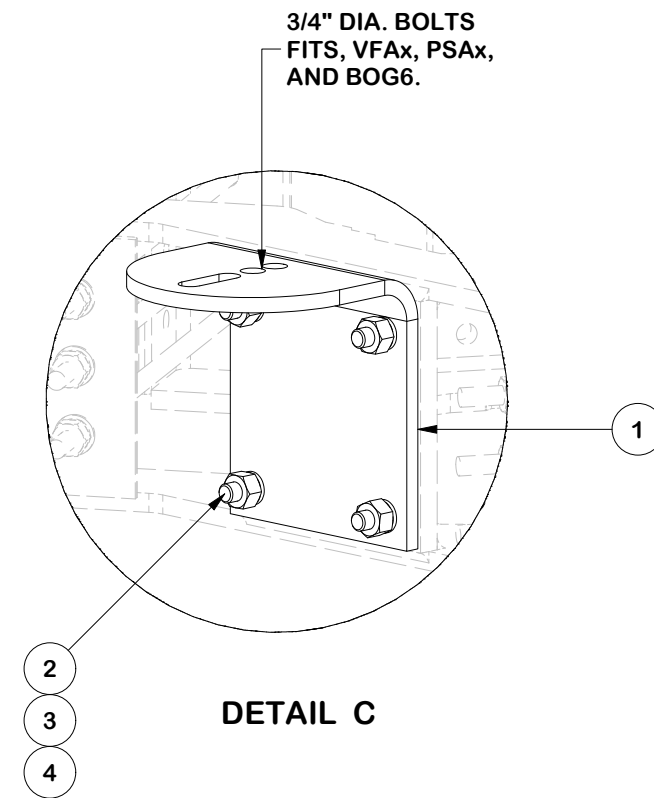
PARTS LIST						
ITEM	QTY	PART NO.	PART DESCRIPTION	LENGTH	UNIT WT.	NET WT.
1	2	X-RMBP	RING MOUNT BENT PLATE CONNECTION	15 1/2 in	17.02	34.04
2	8	A582112	5/8" x 2-1/2" HDG A325 HEX BOLT	2 1/2 in	0.33	2.67
3	8	G58LW	5/8" HDG LOCKWASHER		0.03	0.21
4	8	G58NUT	5/8" HDG HEAVY 2H HEX NUT		0.13	1.04
					TOTAL WT. #	37.96



RING MOUNTS
SOLD SEPARATELY

WORKS WITH
ANY RING MOUNT
WITH 5/8" BOLTS
ON A 6" X 6" BOLT
PATTERN

USE A5802 FOR UGLM
AND UGLM4 CONNECTION



3/4" DIA. BOLTS
FITS, VFAx, PSAx,
AND BOG6.

DETAIL C

TOLERANCE NOTES

TOLERANCES ON DIMENSIONS, UNLESS OTHERWISE NOTED ARE:
 SAWED, SHEARED AND GAS CUT EDGES ($\pm 0.030"$)
 DRILLED AND GAS CUT HOLES ($\pm 0.030"$) - NO CONING OF HOLES
 LASER CUT EDGES AND HOLES ($\pm 0.010"$) - NO CONING OF HOLES
 BENDS ARE $\pm 1/2$ DEGREE
 ALL OTHER MACHINING ($\pm 0.030"$)
 ALL OTHER ASSEMBLY ($\pm 0.060"$)

PROPRIETARY NOTE:
 THE DATA AND TECHNIQUES CONTAINED IN THIS DRAWING ARE PROPRIETARY INFORMATION OF VALMONT
 INDUSTRIES AND CONSIDERED A TRADE SECRET. ANY USE OR DISCLOSURE WITHOUT THE CONSENT OF
 VALMONT INDUSTRIES IS STRICTLY PROHIBITED.

DESCRIPTION
**MONOPOLE DIRECT FLEXIBLE FRAME CONNECT
 KIT 3 SECTORS**

SITE PRO 1
 A valmont COMPANY

Engineering Support Team:
 1-888-753-7446

Locations:
 New York, NY
 Atlanta, GA
 Los Angeles, CA
 Plymouth, IN
 Salem, OR
 Dallas, TX

REV	DESCRIPTION OF REVISIONS	CPD	BY	DATE
B	ADDED NOTE TO PAGE 1	NCS	ADB	3/26/2025
A	CHANGED KITS	NCS	NSP	10/3/2024

REVISION HISTORY

CPD NO.	DRAWN BY	ENG. APPROVAL
NCS	KS 8/13/2025	8/14/2025
CLASS	DRAWING USAGE	CHECKED BY
87	CUSTOMER	JET 8/14/2025

PART NO.	RMBP
DWG. NO.	MDFCC-FLX3